



HYDRANGEAS DEMYSTIFIED



WHICH HYDRANGEA DO YOU GROW?

Though there are 50+ species of hydrangeas found worldwide, only six main types are commonly grown in North American gardens. Each one has its unique characteristics and care requirements, so knowing which one(s) you have is key to success.

BIGLEAF *Hydrangea macrophylla*

- Pink, red, purple, or blue globe-shaped flowers; glossy green leaves
- Bloom on old wood: do not prune, may benefit from winter protection
- Full sun - part shade
- Also known as florist's, hortensia, mophead, or lacecap

CLIMBING *Hydrangea petiolaris* | *Hydrangea hydrangeoides* (formerly *Schizophragma hydrangeoides*)

- White disc-shaped flowers, stems need support of a tree or structure to climb
- Bloom on old wood: do not prune
- Part shade

MOUNTAIN *Hydrangea serrata*

- Pink, red, purple, or blue flowers, usually disc-shaped; glossy green leaves
- Bloom on old wood: do not prune
- Full sun - part shade

COLOR

All hydrangeas undergo some color change as their flowers age, but only bigleaf and mountain hydrangeas can change their color in a predictable, controllable way. It is not solely the pH of the soil that is responsible for this change – it is actually the presence of aluminum in the soil.

- Certain varieties of bigleaf hydrangeas cannot change color. The rich red blooms of Cityline® Paris hydrangea are a good example. Similarly, white bigleaf varieties, like Fairytrail Bride® hydrangea, will not change color.
- It is easier to change a hydrangea from pink to blue than from blue to pink, but both endeavors involve making chemical application in specific amounts at specific times. A soil test is necessary to determine the best course of action. If you decide to try to change the flower color, shop for products carefully and read all directions.
- Pennies, nails, aluminum foil, or coffee grounds in the soil will not change the color!

GROWING TIPS FOR SUCCESS

- Plant in moist but well-drained soil (hydrangeas will not tolerate wet feet – ever!) It's a myth that hydrangeas require acidic soil; they actually tolerate a wide range of pH levels, from acidic to slightly alkaline.
- Some sun each day is ideal. Most people think of hydrangeas as shade plants, but they look and flower best with at least four hours of sun, ideally in the morning. Panicle hydrangeas are the most sun tolerant and can take full sun in northern climates.
- Provide plenty of water, especially as they are getting established. Hydrangeas have shallow roots, so they dry out quickly. A two to three inch layer of shredded bark mulch is a useful addition to any hydrangea planting.

OAKLEAF *Hydrangea quercifolia*

- White conical flowers; large, oak-shaped leaves
- Bloom on old wood: do not prune, rarely needs winter protection
- Full sun - part shade

PANICLE *Hydrangea paniculata*

- White conical flowers that turn pink or red
- Bloom on new wood: prune in late winter/early spring
- Full sun - part shade
- Also known as peegee

SMOOTH *Hydrangea arborescens*

- White, pink, or green flowers, usually globe-shaped
- Bloom on new wood: prune in late winter/early spring
- Full sun - part shade
- Also known as 'Annabelle' hydrangea



Scan the QR code for more details on all Proven Winners® ColorChoice® hydrangeas.



BOBO®
2.5-3' tall + 3-4' wide | USDA 3-8



FIRE LIGHT®
6-8' tall + wide | USDA 3-8



FIRE LIGHT TIDBIT®
2-3' tall + 3' wide | USDA 3-8



LIMELIGHT PRIME®
4-6' tall + 4-5' wide | USDA 3-8



LITTLE LIME®
3-5' tall + wide | USDA 3-8



LITTLE LIME PUNCH®
3-5' tall + wide | USDA 3-8



LITTLE QUICK FIRE®
3-5' tall + wide | USDA 3-8



PINKY WINKY PRIME™
6-9' tall + wide | USDA 3-8



PUFFER FISH®
3-5' tall + wide | USDA 3-8



QUICK FIRE FAB®
6-8' tall + 5-6' wide | USDA 3-8



TINY QUICK FIRE®
1.5-3' tall + 2-3' wide | USDA 3-8



INCREDIBALL®
4-5' tall + wide | USDA 3-8



INCREDIBALL® BLUSH
4-5' tall + wide | USDA 3-8



INVINCIBELLE LACE®
4-5' tall + wide | USDA 3-8



INVINCIBELLE LIMETTA™*
3-4' tall + wide | USDA 3-8



INVINCIBELLE MINI MAUVETTE®*
2.5-3' tall + wide | USDA 4-8



INVINCIBELLE® RUBY*
2.5-3' tall + wide | USDA 3-8



INVINCIBELLE® SPIRIT II*
3.5-4' tall + wide | USDA 3-8



INVINCIBELLE SUBLIME™
3.5-5' tall + wide | USDA 3-9



INVINCIBELLE WEE WHITE®*
1-2.5' tall + wide | USDA 3-8

* reblooming variety



FAIRYTRAIL BRIDE®
4' tall + wide | USDA 6-9



CITYLINE® PARIS
1-2' tall + wide | USDA 5-9



LET'S DANCE ¡ARRIBA!®*
2-3' tall + wide | USDA 4-9



LET'S DANCE BIG BAND®*
2.5' tall + wide | USDA 5-9



**LET'S DANCE®
BLUE JANGLES® ***
1-2' tall + 2-3' wide | USDA 5-9



LET'S DANCE CAN DO!®*
3-4' tall + 3' wide | USDA 4-9



LET'S DANCE LOVABLE™*
3-4' tall + wide | USDA 5-9



**LET'S DANCE®
RHYTHMIC BLUE®***
3-4' tall + wide | USDA 5-9



LET'S DANCE SKY VIEW®*
2-3' tall + 2-4' wide | USDA 4-9



WEE BIT GIDDY®*
2' tall + 2.5' wide | USDA 5-9



WEE BIT GRUMPY®
2' tall + 2.5' wide | USDA 5-9



FLIRTY GIRL®
40-50' tall + wide | USDA 5-9



ROSE SENSATION™
40-50' tall + wide | USDA 5-9



TINY TUFF STUFF™*
1.5-2' tall + wide | USDA 4-9



TUFF STUFF™*
2-3' tall + wide | USDA 4-9



TUFF STUFF AH-HA®*
2-3' tall + wide | USDA 5-9



TUFF STUFF TOP FUN™*
2-3' tall + wide | USDA 4-9



GATSBY GAL®
5-6' tall + wide | USDA 5-9



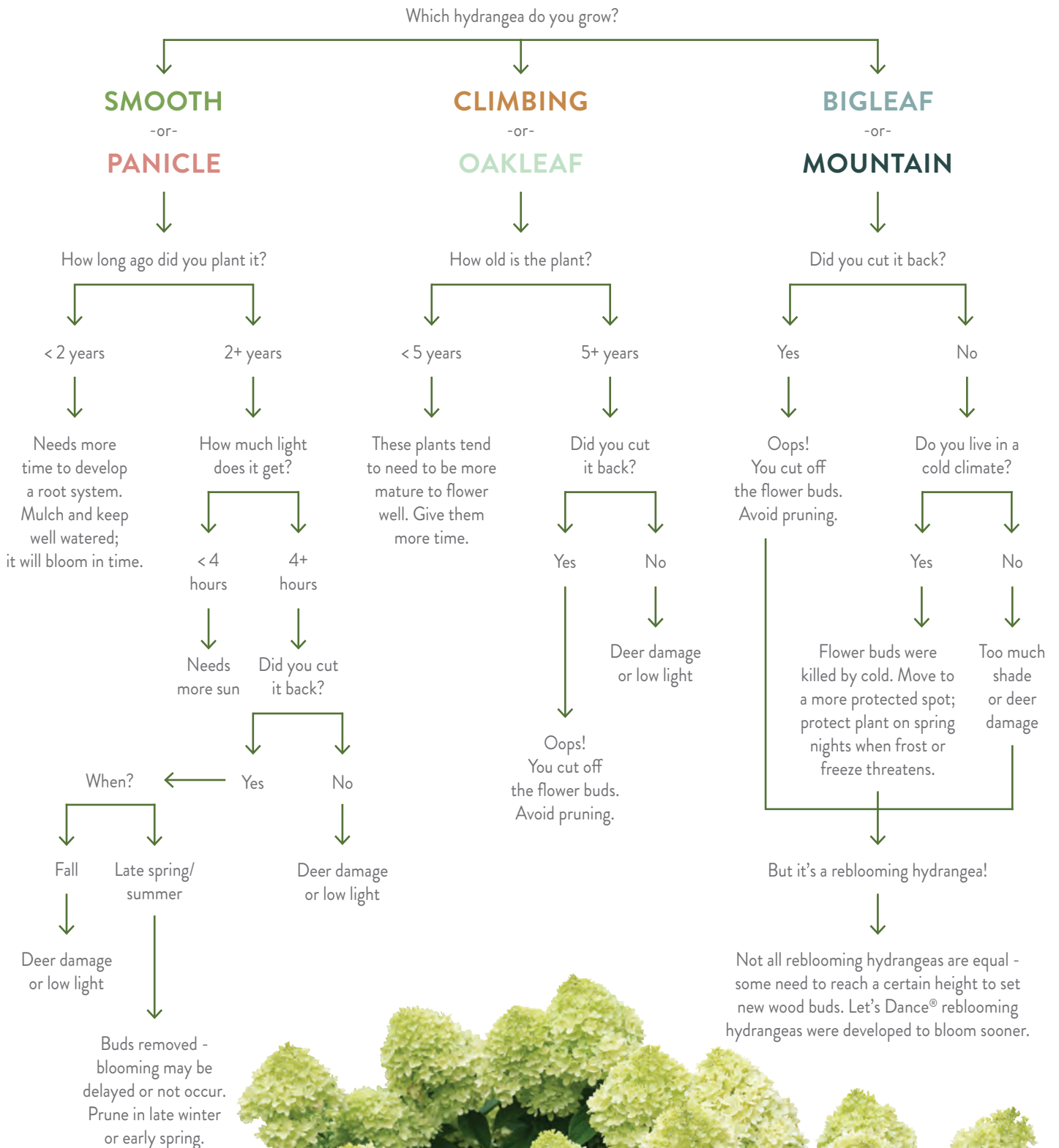
GATSBY MOON®
6-8' tall + wide | USDA 5-9



GATSBY PINK®
6-8' tall + wide | USDA 5-9

* reblooming variety

WHY ISN'T MY HYDRANGEA BLOOMING?





TRIALED & TESTED FOR YOUR SUCCESS.



Head plant breeder Megan Mathey proudly displays Let's Dance Sky View® reblooming hydrangea upon its selection.

It's time to end hydrangea disappointment and confusion for good, and that's exactly what we at Proven Winners® ColorChoice® Shrubs aim to do. We trial and test literally thousands of potential new hydrangea introductions each year. Our research and development team subjects them to a gauntlet of tests for performance, deliberately doing all the hydrangea "don'ts" to see what happens. It takes an average of eight to ten years of rigorous evaluation to ensure every plant we introduce outperforms the other varieties on the market.

Our team of expert horticulturists works to give you everything you need to know to be successful with hydrangeas, like this very booklet. In it, you'll learn how each of the six main types of hydrangeas grown in North America are similar, and different, from one another, so whether you're seeking the blousy blue orbs of the bigleaf hydrangea or the captivating cones of the panicle hydrangea, you'll be growing like a pro.

Look for hydrangeas from Proven Winners® ColorChoice® Shrubs in the distinctive white container at better garden centers across North America; find a retailer near you at [MyPWCOLORCHOICES.com/retailers](https://www.mypwcolorchoices.com/retailers).