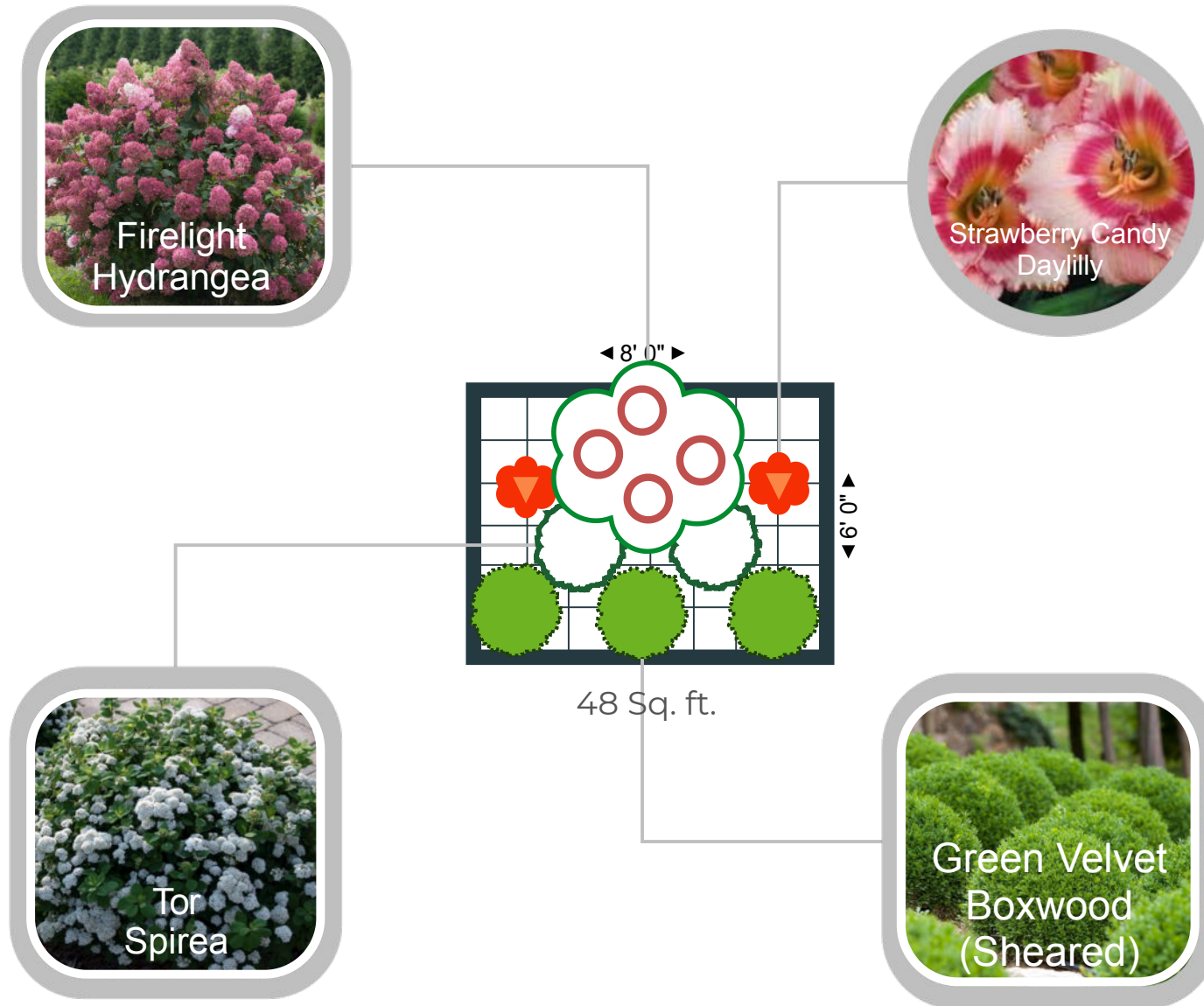






Shrub Border for Sun 1

#	Common Name	Width (spacing)
1	Firelight Hydrangea	6'
2	Strawberry Candy Daylilly	4'
3	Green Velvet Boxwood	24" (Keep trimmed)
2	Tor Spirea	3'



For larger spaces, repeat the design as necessary to fill the space, adjusting the quantities needed when purchasing. The diagram reflects plants at 3/4 mature size. This is a conceptual design to provide general guidelines for your reference and is hardiness zone appropriate for zone 5 or below. Lurveys is not responsible for the health of the plants or the effect of the garden as installed.