



**PROSOCO**®

# Protective treatments



**PROSOCO**®

You. Us. The project.

☎ 800 255 4255

[PROSOCO.COM](http://PROSOCO.COM)

# Protective treatments

## Water ruins expensive masonry

Durable and beautiful though it is, over time simple rainwater can visibly decay and stain unprotected concrete, brick and stone.

Rainwater soaks into masonry. It dissolves natural salts that recrystallize when the surface dries. The salts build up in the masonry pores from repeated wet/dry cycles. In cold weather, water freezes and expands inside the masonry pores. At first, the cracks and fractures from wet/dry and freeze/thaw cycles are microscopic. They don't stay that way.

Combined with other natural forces, such as extreme temperatures and biological growth, this progressive decay can turn an expensive masonry investment into an eyesore and liability.

Water subjects unprotected masonry to:

- Cracking, spalling and delamination
- Efflorescence
- Lime run
- Rust stains
- Damp walls
- Mold, moss and lichen growth
- Corrosion from acid rain
- Reduced thermal insulation

## Stop water damage

### Step 1: Protect the sheathing or CMU backup.

Before the first brick goes up on your new building, seal the sheathing with a breathable, durable, continuous air- and water-resistive barrier.

### Step 2: Protect the masonry with a high-quality water repellent.

When water can't invade the masonry, sheathing or CMU backup, neither can any of the previously described problems. Protective treatments let the beauty and value of masonry investments endure.

Sure Klean® Weather Seal penetrating water repellents provide an invisible, breathable shield against the water-related enemies of masonry. It's protection that lasts — in most cases, 10 to 15 years.

A high-quality water repellent on the masonry, combined with an effective air- and water-resistive barrier on the sheathing or CMU backup, is protection that defeats rain, snow, sleet and ice every time.



Penetrating, breathable water repellents keep water out of valuable masonry, extending service life and preserving appearance and value.

## Water is not the only enemy

### Halt costly, destructive air leakage through the building envelope

Water-based, fluid-applied PROSOCO R-Guard air- and water-resistive barrier systems stop costly air leaks through building envelopes by covering all seams, joints and transitions.

That stops expensively conditioned air from leaking out. It keeps hot or cold outside air from leaking in, overburdening HVAC systems. And it helps prevent mold.

A National Institute of Standards and Technology study found that stopping air leaks saves buildings up to 40 percent or more in natural gas costs, and 25 percent or more in electricity. Oak Ridge National Laboratory tests confirm R-Guard's ability to promote dry, mold-free walls, and stop costly air leaks.

Halting the passage of warm, moist air through walls means no condensation in the walls, denying mold the moisture it needs to live. And if walls do get wet inside, vapor-permeable R-Guard systems promote drying.

### Stop oil, food, grease and other staining

From major commercial or civic paver installations to the intimacy of a family patio, Paver Kare® products keep out water, weeds and dirt. They seal in beauty, durability and value.

Stand Off® protective treatments control staining and deterioration of grout, ceramic tile, natural stone and architectural concrete. Protected surfaces last longer and clean easier. These high-quality, penetrating treatments chemically bond with the substrate for long-lasting protection. Surfaces keep their natural appearance. Unlike conventional repellents, Stand Off® products won't blush or form traffic patterns.

### Resist abrasion, salt attack and traffic

PROSOCO's Consolideck® products ensure your horizontal concrete surfaces stand up to the pounding of industry, weather or both! Easy-application, VOC-compliant protective treatments cure, harden, densify, color and beautify concrete flatwork, new or old — and block the attack of de-icing chemicals, preventing cracks, spalls and potholes.

### Win the war against graffiti

Left alone, graffiti doesn't go away — it attracts more graffiti. When graffiti vandals hit Grant's Tomb in New York and the Vietnam Veterans' Memorial in Kansas City, Mo., experts understood rapid removal is the key to stopping graffiti. They used PROSOCO's Defacer Eraser® products for quick removal.

## Repair damaged masonry

Even when the damage is already done, it's not too late. Consolidation treatments repair and strengthen decayed concrete, brick and stone. They replace the masonry's natural binding material lost to weathering.

Conservare® consolidation treatments have brought strength and durability back to some of America's most treasured architecture, including

- U.S. Capitol
- Harvard's Memorial Hall
- City and County Building, Salt Lake City
- State capitols across the nation, and many more.

For VOC information on PROSOCO's protective treatments, see the applicable product data sheet.

# PROSOCO R-Guard®

## Air- and water-resistive barrier systems

### Prepare

#### **R-Guard GypPrime**

Easy-application brush or spray GypPrime seals and consolidates the cut edges of gypsum wallboards where they're exposed in rough openings. Creates perfect surface adhesion for R-Guard FastFlash.

#### **R-Guard Joint & Seam Filler**

Simple "gun & spread" Joint & Seam Filler seals seams, joints, transitions, corners and more without time-consuming fabrics, tapes, mesh or self-adhered membranes. Compatible with all sheathing types, it dries tack-free in 30 minutes and is immediately waterproof.

#### **R-Guard FastFlash®**

Tested and proven to stop destructive water penetration of transition points, door and window assemblies, and paneling joints, FastFlash stands up to the most severe conditions, including hurricanes and high-intensity Midwestern and mountain storms. FastFlash can be exposed to weather up to six months in case of construction delays.

### Protect

#### **R-Guard Cat 5®**

PROSOCO R-Guard® Cat 5 goes on easy — then stays on, even in the most severe weather. Cat 5 is tested to Category 5 hurricane conditions and beyond. And that's before the cladding goes up! You won't find tougher.

#### **R-Guard Spray Wrap**

In tests, seamless, structural R-Guard Spray Wrap proved 75 percent faster to install than easily torn and detachable building wraps. Effective over most joint treatments, CMU and sheathing substrates, Spray Wrap protects exposed structural walls from weather for up to six months.

#### **R-Guard MVP (Maximum Vapor Permeability)**

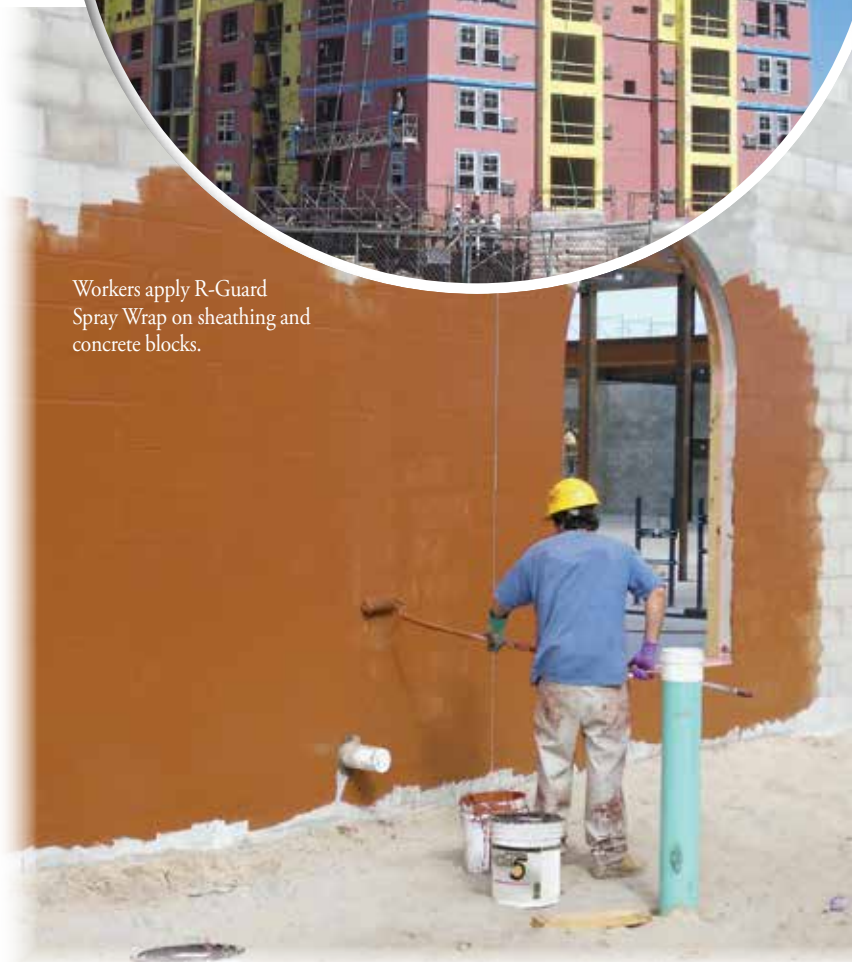
At 17 perms, R-Guard MVP meets specs for high vapor permeability while providing the easy application, durability, seamlessness and continuity construction professionals demand.

#### **R-Guard VB (Vapor Barrier)**

Water-based, vapor-impermeable, air- and water-resistive VB minimizes damaging air and water intrusion into structural walls.



Workers apply R-Guard Spray Wrap on sheathing and concrete blocks.



A technician uses a roller to easily apply R-GUARD Cat 5 to concrete block.

### Transition

#### **R-Guard AirDam®**

Stops destructive air leaks into window assemblies by blocking the entry point between frame and structural wall. Solvent-free AirDam stays durable and flexible indefinitely, is gunnable in cold weather, and bonds to most window and structural wall substrates.

### Emergency repair

#### **R-Guard EMERGENCY WaterStop**

Seals most building materials against water leaks in all weather, wet or dry, even under water! Breathable, durable, easy to gun and tool in any weather, and doesn't support mold growth.

# Protective treatments

## masonry, stone and concrete

For decades, these remarkable treatments have helped control maintenance, repair and cleaning costs on masonry, concrete and natural stone. From roads and bridges to schools and skyscrapers, professionals choose the industry's leading silane and siloxane technologies to protect and extend the service life of our built environment.

### Weather Seal Siloxane PD

*For architectural and steel-reinforced concrete, GFRC, and most masonry and stucco surfaces*

Breathable, water-based Siloxane PD (Predilute) penetrates deeply into masonry right out of the container. It bonds with the substrate to lock out water and the destructive salts and dirt water carries. When you keep water out, you keep out spalling, cracking, staining, mold, mildew and other expensive problems.

*Service life: 10+ years*

### Weather Seal Siloxane WB Concentrate

*For architectural and steel-reinforced concrete, GFRC, and most masonry and stucco surfaces*

Siloxane WB (water-based) Concentrate provides penetrating, breathable protection for dense or porous substrates. It's concentrated for economy, easy storage, transport and container disposal. Dilute at the job site with up to 19 parts water. The solvent-free treatment can protect up to 4,000 square feet per gallon.

*Service life: 10+ years*

### Weather Seal Natural Stone Treatment

*For natural stone and clay brick*

Specifically developed to protect limestone, marble and other calcareous surfaces, Natural Stone Treatment will not alter the natural appearance of stone. It WILL reduce mold, mildew and atmospheric staining. And it's as good indoors as it is out.

*Service life: 10+ years*

### Weather Seal Natural Stone Treatment Plus

*For most clay masonry and unpolished stone*

Weather Seal Natural Stone Treatment Plus shields valuable stone and other masonry from destructive water penetration. Natural Stone Treatment Plus is low-odor, has reduced flammability and is breathable and penetrating.

*Service life: 10+ years*

### Weather Seal Blok-Guard® & Graffiti Control

*For concrete block and other porous masonry*

Rain and graffiti soak right into exterior concrete block and other porous masonry – but NOT when Blok-Guard® & Graffiti Control is on the job. It penetrates and fills pores, stopping water-related stains and graffiti penetration—graffiti practically slides off treated walls with application of Defacer Eraser® Graffiti Wipe. Application is easy with brush, roller or low-pressure spray.

*Service life: 5-7 years*

### Weather Seal Blok-Guard® & Graffiti Control II

*For concrete block, porous clay brick, precast concrete, porous stone and stucco*

This water-based graffiti and water repellent has all the protective power of its solvent-based cousin. Blok-Guard® & Graffiti Control II meets all VOC (Volatile Organic Compound) regulations nationwide, from San Diego to New York. Like the original, it won't change the treated surface's appearance – and it won't let anyone else change it either!

*Service life: 5-7 years*

### Weather Seal Blok-Guard® & Graffiti Control Ultra

*For concrete block and other porous masonry*

New Blok-Guard® & Graffiti Control Ultra takes the power and efficiency of a solvent-based silicone formula and makes it VOC-compliant. Use it anywhere in the country where graffiti and weathering threaten masonry and concrete, new or old.

*Service life: 10-12 years*

### Weather Seal H40

*For porous and deteriorating stone, brick and most natural stone*

This deep-penetrating, consolidating water repellent not only keeps water out of masonry, it increases mechanical and compressive strength. H40 strengthens weathered surfaces and soft mortar joints. It's ideal for masonry already damaged by water, wear and weathering. H40 also helps masonry resist the attack of destructive mold, mildew and fungal growth.

*Service life: 10-12 years*

### Weather Seal SL100 Water Repellent

*For precast, steel-reinforced and form-finished concrete, GFRC and most natural stone*

Weather Seal SL100 offers maximum penetration and superior performance on dense and color-sensitive surfaces. You get invisible, breathable, solvent-free protection against water, salt, and other water-carried contaminants. SL100 is economical, with coverage rates 2 to 4 times that of conventional solvent-reduced water repellents.

*Service life: 10-15 years*

### Sure Klean® Custom Masonry Sealer

*For architectural concrete block, cast stone, brick and many other surfaces*

Long-lasting Custom Masonry Sealer interrupts the destructive "freeze/thaw" cycle by letting water vapor out without letting liquid water in. It keeps out the dirt and corrosive salts that water often carries. Protection against many types of graffiti, and excellent UV stability are also part of the package.

*Service life: 5-7 years*

## **Sure Klean® Burnished Block Sealer**

*For burnished concrete block*

Whether the block is on the building or on the way to the building, Burnished Block Sealer offers appearance-improving protection. Apply in-plant to shield burnished block from weather and the scuffs and scrapes of transport. On the building, Burnished Block Sealer makes it easier to remove excess mortar and other job-site soiling. After cleaning, reapply for more glossy weather protection.

*Service life: 5-7 years*

## **Sure Klean® Weather Seal GP**

*For concrete, stucco and most masonry surfaces*

Weather Seal GP is a general-purpose, economical, ready-to-use, water-based silane/siloxane water repellent. Breathable, low-odor and UV-stable, Weather Seal GP is ideal for most field applications.

*Service life: 3-5 years*

## **Stand Off® SLX100® Water & Oil Repellent**

*For concrete, brick and stone*

SLX100® Water & Oil Repellent provides top water, oil and stain repellency for nearly any concrete, masonry or stone surface. Great for color-sensitive and dense substrates, penetrating SLX100® keeps liquid from spilled food, drink, grease, oil and other contaminants on the surface for easy clean-up.

*Service life: 3-5 years*

## **Stand Off® SLX100® Water & Oil Repellent <350**

*For concrete, brick and stone*

SLX100® Water & Oil Repellent <350 combines top water and oil repellency with VOC levels low enough for every U.S. state, including most of California. This long-lasting protective treatment for concrete, brick and stone won't let liquid from spilled food, drink, grease, or oil soak in and discolor expensive masonry.

*Service life: 3-5 years*



# Protective treatments

## concrete, clay and stone paver hardscapes

From public squares and vast pedestrian malls to intimate patios in upscale residential neighborhoods, nothing says “quality and value” like a hand-laid paver hardscape. But that value drops with every tire mark, grease stain or other contaminant. Construction soiling, water penetration, de-icing salts and other problems can diminish the value of the most beautiful paver installations.

Keep those culprits at bay with Paver Kare® cleaners and protective treatments from PROSOCO – created specifically for paver professionals by the makers of Sure Klean® products.

### **Paver Kare® Sand Joint Stabilizer**

*For concrete and brick pavers*

Keep the sand in the paver joints and the weeds out with new Sand Joint Stabilizer. This unique protective treatment consolidates paver joint sand to a mortar-like consistency. It holds sand in joints despite cleaning, weather and traffic. It guards pavers and joints against harmful water penetration. Sand Joint Stabilizer is easy to apply; fast to dry.

### **Paver Kare® Paver Enhancer**

*For concrete, clay and most stone pavers*

Trade in efflorescence, mildew and traffic-related staining for deeper, richer, more uniform color on paver surfaces. Water beads up and runs off treated surfaces, yet there's no surface film to prevent “breathability” or create a slip hazard.

### **Paver Kare® Paver Enhancer WB**

*Water-based, color-enhancing protective treatment*

Water-based Paver Enhancer WB is perfect for places with restrictive VOC regulations. This easy-application protective treatment delivers deep, rich color enhancement and breathable, penetrating water repellency on clay, concrete or stone pavers, new or old.

### **Paver Kare® Deep Sheen**

*For concrete, clay and most stone pavers*

Glossy, slip-resistant Deep Sheen is the perfect protective treatment for pavers inside or out. The lustrous yet chemical-resistant finish shields expensive pavers from the etch and stain of acidic and caustic chemicals, ranging from food and drink to powerful cleaners. Water-repellent Deep Sheen stands up to weather, rain or shine, with no blushing, yellowing or dulling out.

### **Paver Kare® Deep Sheen WB**

*For concrete, clay and most stone pavers*

Glossy, slip-resistant Deep Sheen, the perfect protective treatment for pavers inside or out, now comes in a VOC-compliant water-borne version. Lustrous, chemical-resistant Deep Sheen WB still shields expensive pavers from the etch and stain of food, drink, cleaning agents and weather, while meeting all known volatile organic compound regulations from Maine to California.





Inset photo: Transmission fluid, unable to soak in and stain this treated paver, awaits cleanup.

# Protective treatments

## dimensional stone and tile

The value of a stone, ceramic tile or architectural concrete surface drops with every ground-in bit of grease, grime, food, oil, smoke or other contaminant that besmudges it. Water penetration, and the resulting destructive freeze-thaw cycle, can also stain, crack or flake expensive masonry. You don't have to stand for that. Keep those enemies at bay with PROSOCO's Stand Off® products. Let the beauty — and value — of your masonry endure.

### Stand Off® SLX100® Water & Oil Repellent

*For granite, tiles, pavers and concrete*

This penetrating treatment protects dense, color-sensitive surfaces from the ravages of water and oil attack, including stains from spilled food and drink. Breathable SLX100® won't change surface appearance. It lets vapor out without letting dirt and water in.

### Stand Off® SLX100® Water & Oil Repellent <350

*For granite, tiles, pavers and concrete*

SLX100® Water & Oil Repellent <350 combines effective water, oil and stain repellency with VOC levels low enough for every U.S. state, including most of California. This long-lasting stain repellent protects expensive surfaces from staining by spilled food, drink, grease, oil and other contaminants until they can be cleaned up.

### Stand Off® Stone, Tile & Masonry Protector (STMP)

*For brick, tile, concrete and most natural stone*

Easy-to-use, low-odor STMP stops stain attack indoors and out. From motor oil on concrete garage floors, to orange juice, ketchup or wine on expensive restaurant tile, breathable, penetrating STMP keeps it from soaking in. Cleanup is easy with soap and water or Stand Off® Rinseless Cleaner.

### Stand Off® Limestone & Marble Protector

*For most natural stone, brick, tile and concrete*

Limestone & Marble Protector is made for protecting limestone and marble from water, oil and other destructive staining agents. Treated surfaces keep their natural appearance, color and texture. It also gives penetrating, breathable protection to most masonry. But there's nothing better for limestone and marble.

### Stand Off® Gloss 'N Guard

*For natural stone, tile, pavers and other masonry*

"The shine that shields" gives your natural stone tiles and pavers the deep lustrous finish that resists dirt, oil, scuff marks and more! Easy-to-use Gloss 'N Guard protects and enhances vertical as well as horizontal surfaces — indoors and out. The beautiful but durable protective coating improves slip resistance on honed and polished surfaces. It also simplifies maintenance cleaning, since even oil and organic stains can't penetrate.

### Stand Off® Stain Barrier

*Penetrating water, oil & stain repellent*

This economical, easy-to-use protective treatment guards interior and exterior stone, quarry tile, concrete and masonry surfaces against oil, food and waterborne stains. Perfect for large concrete parking decks. Maintenance cleaning is fast and easy on surfaces treated with penetrating, invisible Stain Barrier. Low-odor Stain Barrier complies with all known VOC regulations.

### Stand Off® Gloss 'N Guard WB

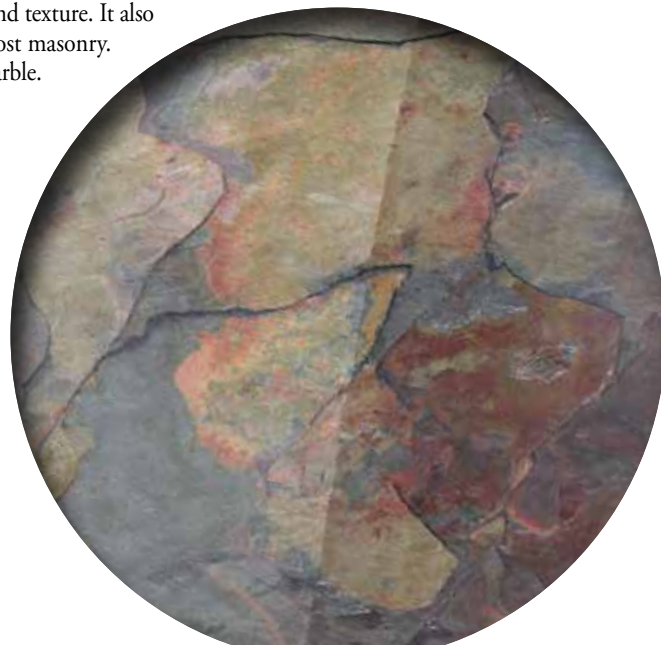
*For all masonry types*

The water-based version of "the shine that shields" is a highly durable water-based acrylic protective coating for tile, pavers, terrazzo and other polished and unpolished masonry — horizontal and vertical. Gloss 'N Guard WB creates a lasting protective shield of unparalleled beauty and durability. The water-based formula means no solvent odor, easy soap and water cleanup, and reduced fire hazard. Gloss 'N Guard WB complies with all known regulations limiting Volatile Organic Compound (VOC) content.

### Stand Off® Color Enhancer WB

*Water-based protective treatment for natural stone*

Indoors or out, Color Enhancer WB protects valuable stone surfaces against spills and stains, while enriching the stone's natural color. The water-based formula makes it compliant with VOC regulations from California to Maine. Easy-application, low-odor Color Enhancer WB is also great for clay and concrete pavers, new or old.







# Protective treatments

## concrete flatwork/finished concrete flooring

Concrete has taken a pounding ever since the Romans introduced it 2,200 years ago. PROSOCO protective treatments help concrete flatwork stand up to the worst abrasion, traffic, spills and weather the world can muster. Harder, denser, glossier, more chemically resistant concrete means longer service life, easier maintenance and greater value.

Parking deck or factory floor, PROSOCO has the right protective treatments for your concrete flatwork project.

### Consolideck® LS® (lithium-silicate)

*Premium sealer, hardener & densifier for horizontal concrete*

Easy-application LS hardens, densifies and protects concrete floors with no scrubbing or flushing. It's perfect for any concrete floor – rugged industrial to highly-polished hospitality. LS meets the nation's highest indoor air-quality standards.

### Consolideck® LS/CS®

*Economical sealer, hardener and densifier for horizontal concrete*

LS/CS-treated floors are dustproof, and resist abrasion, water, chemicals and traffic. Like its premium cousin LS, LS/CS uses no solvents, and is VOC-compliant nationwide. Just spray or mop it on, and let it penetrate. No flushing needed! Your floor is ready to take on the world in two hours – or less!

### Consolideck® GemTone Stain

*Penetrating translucent color dye for concrete floors*

Applying new and improved GemTone Stain is the first step in turning dull gray concrete floors into colorful gleaming surfaces. Safe, water-based GemTone Stain goes on easily with a pump-up sprayer and microfiber pad. Mix or match 21 translucent colors for an unlimited color palette.

### Consolideck® ColorHard

*One-step color and hardener for concrete floors*

Mix 4 ounces of ColorHard concentrate with one gallon of Consolideck® LS® lithium-silicate hardener/densifier to turn gray concrete into colorful, low-maintenance, ultra-durable, decorative concrete. ColorHard is perfect for any floor old or new, with options for interiors and exteriors.

### Consolideck® Color Enhancer WB

*Water-based, color-enhancing protective treatment*

Revive the appearance of faded, weathered concrete, tile and stone surfaces. Rev up the color intensity of new installations. This penetrating water repellent also keeps them looking great by protecting against water and weather.

### Consolideck® DuraSheen

*High-gloss cure and seal for concrete*

DuraSheen protects new and old concrete from chemicals, water and abrasion – and looks great doing it! Old concrete gets new life and new concrete cures to maximum hardness. Both get a premium shine. Treated concrete won't "yellow" – independent lab tests confirm DuraSheen's non-yellowing characteristics outlast and outperform similar products.

### Consolideck® LSGuard®

*Glossy sealer, hardener & densifier for concrete*

LSGuard combines high-gloss beauty and stain resistance with the penetrating toughness of Consolideck® LS® – PROSOCO's premium sealer, hardener and densifier for concrete floors. The fast-drying lithium-silicate treatment seals concrete floors with a micro-thin, nail-hard, shiny, protective finish that never needs stripping. And the high coverage rate of 1,000–1,500 sq. ft. means low installed cost.

### Consolideck® PolishGuard

*Glossy protective sealer for interior horizontal concrete*

Durable, water-based PolishGuard provides superior resistance to spills of acidic liquids known to damage polished concrete floors, such as vinegar, milk, fruit juices and soft drinks. Perfect for grocery stores, kitchens and other facilities subject to spills, stains and traffic.

### Consolideck® GuardEXT

*Glossy sealer for exterior horizontal concrete*

GuardEXT dramatically increases the resistance of exterior horizontal concrete, decorative or standard gray, to stains from food, drink and petroleum products. Easily applied with pump-up sprayers, this low-odor protective treatment also shields against weathering.

### Consolideck® Saltguard®

*Deeply penetrating water & salt barrier for concrete*

This breathable, deeply penetrating blend of silanes and siloxanes is the perfect answer to the corrosive salt air of coastal areas, and the destructive de-icing salts of winter weather everywhere. With a service life of 7-10 years, Saltguard is ideal for parking decks, driveways and sidewalks, as well as brick, concrete, tile and most natural stone pavers.

### Consolideck® Saltguard® WB

*For horizontal and vertical concrete and many other masonry surfaces*

Now get the long-lasting power of Saltguard® in a water-based, VOC-compliant version. Just like the original Saltguard®, breathable, penetrating Saltguard® WB blocks the destructive attack of salt on concrete, from corrosive salt air or the damaging de-icing salts of winter.

### Consolideck® SingleStep®

*Cure and seal for concrete*

No more slow, costly water-curing, or stripping chemical cures before sealing. Get it done in one fast and easy step. Roll, brush or spray SingleStep onto concrete, new or old. It gives concrete a durable, water-repellent gloss and keeps moisture in until the concrete is fully cured – then keeps destructive water and de-icing salts out. Perfect for decorative concrete.

### Consolideck® SLX100® Water & Oil Repellent

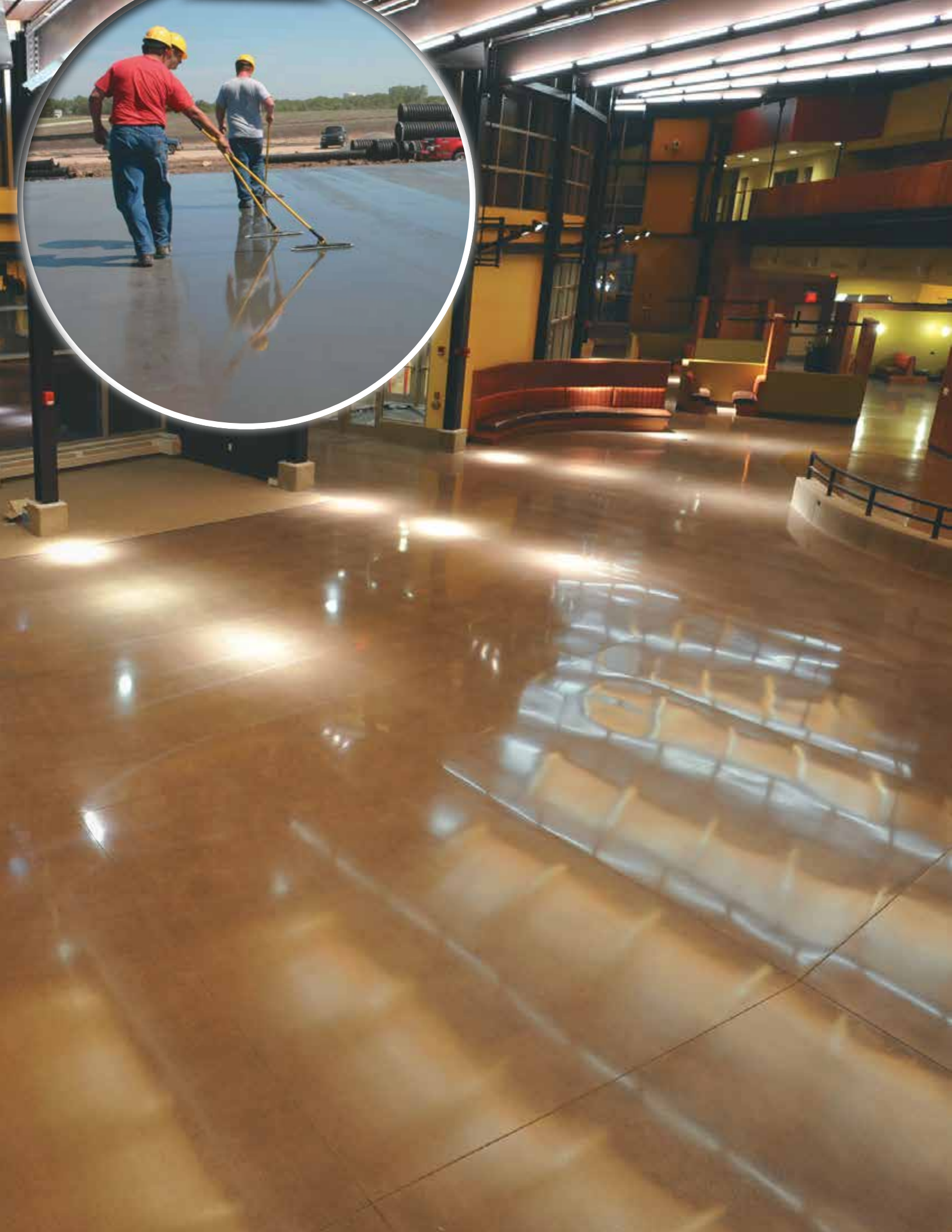
*For all concrete floors, industrial to highly polished*

SLX100® Water & Oil Repellent provides top water, stain and oil repellency for concrete floors subject to all kinds of traffic. This penetrating protective treatment keeps liquid from spilled food, drink, grease, oil and other contaminants on the surface for easy clean-up.

### Consolideck® SLX100® Water & Oil Repellent <350

*For all concrete floors, industrial to highly polished*

SLX100® Water & Oil Repellent <350 helps keep oil, grease, food and water from staining every kind of horizontal concrete, from auto service bays to polished decorative floors. Its VOC level qualifies for every U.S. state, including most of California.



# Protective treatments

## masonry and stone consolidation

Since the 1980s, conservators have used PROSOCO's Conservare® treatments to save much of North America's most spectacular and valued architecture from decay and loss. New York's Trinity Church, the U.S. Capitol, Indianapolis' Soldiers and Sailors Monument and countless other projects have gotten new leases on life, thanks to the stone-strengthening characteristics of these remarkable products.



### **Conservare® HCT (Hydroxylating Conversion Treatment)**

*For marble, travertine, limestone and other carbonate stones*

Consolidation of crumbling marble and limestone has always been difficult. These carbonate surfaces frequently lack bonding sites which consolidants such as Conservare® OH100 and H100 require to strengthen and protect them from wear. Used as a pre-treatment to consolidation, Conservare® HCT forms a well-adhered conversion layer on the surface of carbonate grains. The conversion layer reduces the vulnerability of marble and limestone to acid rain and weathering, and makes the surface responsive to surface strengthening and protective treatments.

### **Conservare® OH100 Consolidation Treatment**

*For most types of natural stone, concrete, stucco, brick, and terra cotta*

Conservare® OH100 is a ready-to-use consolidation treatment that stabilizes decaying masonry by using silicone dioxide to replace natural binding materials lost to weathering. This “replacement” binder is also mineral — very similar to the stone it strengthens. Additionally, it's acid rain-resistant. Conservare® OH100 penetrates deeply, doesn't form surface crusts, and lets the treated surface “breathe.” It's also an effective pre-treatment for crumbling substrates which have to be strengthened just to allow cleaning, patching or coating.

### **Conservare® H100 Consolidation Treatment**

*For most types of natural stone, concrete, stucco, brick and terra cotta*

This deep-penetrating consolidation treatment strengthens deteriorated masonry while increasing its resistance to further decay — including acid rain. Conservare® H100 replaces the natural cement decayed stone has lost to weathering. The tough, new silicon dioxide binder is virtually identical to that of natural stone. Breathable, easy-application Conservare® H100 Consolidation Treatment helps give new life to old and valued masonry.

**Consolidating decaying** limestone has long been problematic. Conservare® HCT answers the problem by strengthening carbonate stone, increasing its resistance to weathering and acid rain, and preparing it for further consolidation and protective treatments. (Massachusetts State Capitol, Boston)



Though the centuries have taken their toll, it's not too late for this sandstone Madonna at Lichfield Cathedral, Lichfield, England.

# Protective treatments

## graffiti removal and prevention

Rapid removal is the key to stopping graffiti. Studies show that graffiti vandals usually move on from locations where their work is quickly erased. But choose your weapons well — harsh chemicals or abrasives can permanently damage your masonry investment. The wrong solution can lock graffiti in — permanently. That's big trouble, because graffiti attracts more graffiti.

PROSOCO's Defacer Eraser® graffiti removal and protection line has the right product for you. These products won't change the natural appearance of your masonry — and they won't let anyone else change it either.

### **Sure Klean® Weather Seal Blok-Guard® & Graffiti Control**

*For concrete block and other porous masonry*

Rain and graffiti sink right into exterior concrete block and other porous masonry — but NOT when Weather Seal Blok-Guard® & Graffiti Control is on the job. It penetrates and fills pores, stopping water penetration while letting the masonry “breathe.” Treated surfaces resist graffiti penetration — graffiti practically slides off treated walls with application of Defacer Eraser® Graffiti Wipe. Application is easy with a low-pressure spray, brush or roller.

### **Sure Klean® Weather Seal Blok-Guard® & Graffiti Control II**

*For concrete block, porous clay brick, precast concrete, porous stone and stucco*

This water-based graffiti and water repellent has all the protective power of its solvent-based cousin. Like the original, breathable Blok-Guard® & Graffiti Control II penetrates porous masonry and concrete to keep destructive water and unsightly graffiti from soaking in. The difference? Blok-Guard® & Graffiti Control II meets all VOC (Volatile Organic Compound) regulations nationwide from San Diego to New York. Like the original, it won't change the treated surface's appearance — and it won't let anyone else change it either!

### **Sure Klean® Weather Seal Blok-Guard® & Graffiti Control Ultra**

*For concrete block and other porous masonry*

New Blok-Guard® & Graffiti Control Ultra takes the power and efficiency of a solvent-based silicone formula and makes it VOC-compliant. Use it anywhere in the country where graffiti and weathering threaten masonry and concrete, new or old. This easy-application protective treatment keeps graffiti media from soaking in, aiding fast removal. It keeps water from soaking in, too, preventing moisture-related stains and damage.

### **Defacer Eraser® Sacrificial Coating SC-1**

*For virtually all hard surfaces needing graffiti protection*

Paint THIS! Graffiti vandals give it their best shot, but it all comes off safe and easy with a simple high-pressure hot-water rinse. That is, when you protect your masonry with Sacrificial Coating SC-1. The clear, water-based coating allows cost-effective control of the most popular graffiti targets. It won't damage your masonry like traditional chemical strippers and abrasives. No hot water? Cold water works, with a boost from Defacer Eraser® Graffiti Wipe. Reapply after each use, and say goodbye to graffiti.

### **Defacer Eraser® Graffiti Wipe**

*For all masonry surfaces — wood and metal, too!*

It's easy to slap graffiti on a wall. Now it's just as simple to wipe it off! Safe, easy-to-use Graffiti Wipe takes spray paint off a wide variety of masonry protected with Sacrificial Coating SC-1, Weather Seal Blok-Guard® & Graffiti Control or Blok-Guard® & Graffiti Control II. Graffiti Wipe also works on unprotected metal, wood and most glass. Smooth, dense surfaces — just put it on a towel and wipe away your graffiti woes. Rough or porous surfaces — a brush or low-pressure spray does the trick. Made with extracts from citrus fruit, Graffiti Wipe rinses easily in hot or cold water. It also gives a high-powered boost to cold-water rinses on Sacrificial Coating SC-1, when hot water isn't an option.



**Rapid removal** is the key to stopping graffiti. Defacer Eraser® protective treatments and graffiti cleaners are the key to rapid removal.



# Customer Care

One of the most important ingredients in any masonry cleaner isn't in the cleaner.

It's the technical support and customer service that comes with the cleaner. PROSOCO wants to make sure you have the right product and the right information to succeed.

Factory-trained representatives are available throughout the U.S. to help with specifications or troubleshooting. PROSOCO's Customer Care representatives are just a toll-free call away at 800-255-4255 to help you find the right product, the nearest rep or a solution to a problem.

Visit our website at [www.prosoco.com](http://www.prosoco.com) for useful information about products, specifications and more.

## Product Data Sheets and Safety Data Sheets

Getting them is as easy as visiting PROSOCO's website at [www.prosoco.com](http://www.prosoco.com) or calling Customer Care at 800-255-4255.



With a combined experience of more than 60 years, PROSOCO's Product Support Specialists are well-versed in providing customers help. From order entry and shipment tracking to technical assistance and product recommendations, PROSOCO's Customer Care Department is only a phone call away. From top left to right: Ted Barnekoff; Lucy Klick; Ken Hatfield; Vaucele Pearson; Phil Harden; Colleen Peters, Customer Care Supervisor; and Mike Brennan, Customer Care Manager.

# Before you protect...clean

## New construction cleaners

### 600

Dissolves mortar, grout, dirt and other stains on new masonry.

### Vana Trol®

Cleans light-colored brick prone to metallic staining.

### 101 Lime Solvent

Strips common construction stains from dark brick, concrete block and more.

### Concrete Brick Cleaner

Non-etching cleaner removes excess mortar, clarifies joints and improves color uniformity.

### Residential BrickCLEAN Plus

Economical concentrate dissolves hardened excess mortar, construction dirt, efflorescence and more from newly constructed residential brick.

### Custom Masonry Cleaner

Improves color uniformity while cleaning architectural concrete.

### Burnished Custom Masonry Cleaner

Cleans and improves color uniformity on smooth and polished concrete.

### Manufactured Stone Cleaner

Improves color and gets rid of common construction soiling and atmospheric soiling with no danger of etching.

### Safety Klean

Removes excess mortar and job-site soiling without hydrochloric acid components.

### White Scum Remover

Dissolves hard salt deposits other cleaners can't, on brick and tile.

### 800 Stain Remover

Rids buff/white brick of metallic stains.

### Ferrous Stain Remover

Takes rust, manganese and other metallic stains off brick, concrete and stone.

### Light Duty Concrete Cleaner

Cleans architectural and engineered concrete without danger of etching.

### Heavy Duty Concrete Cleaner

Concentrated cleaner improves color uniformity on standard, colored, precast and block.

## Restoration cleaners

### EK Restoration Cleaner

Near-neutral pH cleaner simplifies wastewater handling while dissolving dirt, carbon and more.

### Light Duty Restoration Cleaner

Strips moderate atmospheric and oxidation stains from dense masonry and glass.

### Restoration Cleaner

Scours carbon stains off brick, unpolished granite, sandstone, exposed aggregate and more.

### Heavy Duty Restoration Cleaner

Concentrated power cleanser for unpolished granite, sandstone, terra cotta, brick and slate.

### 766 Limestone & Masonry Prewash

Nonacidic gel dissolves heavy carbon crusts on nearly any masonry surface.

### Limestone Restorer

Frees unpolished limestone, cast stone and concrete from mildew, atmospheric stains and more.

### SafRestorer

Safe around most metals, this low-odor restoration cleaner cuts atmospheric and carbon staining, white scum and more.

### ReKlaim

Rids horizontal and vertical masonry and stone of biological and atmospheric staining.

### Heavy Duty Paint Stripper

Nonflammable gel cuts multiple paint and coating layers on most masonry.

### SafStrip

High-strength paint and coating remover works fast without methylene chloride, harsh acids, caustics or solvents.

### SafStrip 8

Neutral pH paint stripper breaks the bond of the toughest coatings, without using methylene chloride or methanol.

### Safety Peel 1

Non-methylene chloride paste "peels" from masonry surfaces for safe disposal after trapping contaminants.

### EIFS Clean 'N Prep

Safely cleans sensitive Exterior Insulated Finish Systems and preps for further coatings.

### 2010 All Surface Cleaner

Next-generation cleaner/degreaser wipes out light-to-severe stains on nearly any surface.

### ReVive

Safely removes biological staining from most concrete, stone and masonry surfaces.



**PROSOCO**

3741 Greenway Circle • Lawrence, KS 66046  
800 255 4255 • prosoco.com